

BANGLADESH

Connecting Customs and PGAs

The Bangladesh National Board of Revenue (NBR) asked the Programme to develop interfaces with external systems and develop features within ASYCUDAWorld to connect customs and PGAs.

Situation

Since 2016, the NBR has wanted to integrate PGAs into ASYCUDAWorld in order to improve the exchange of information with external systems and increase the efficiency of customs clearance processes by improving manifest and declaration processing and tax payment mechanisms.

Solution

A secure exchange of data was established between ASYCUDAWorld and:

- Banks, for submitting information such as tax payments, export permits and letters of credit
- The Tax Management System, for the notification of tax collection
- The Container Terminal Management System, to instruct port authorities when to release containers
- The traders, who are notified by SMS/email on the progress of their declarations

Result

- Accelerated customs clearance process for imports in 2021: 82% declarations assessed within 3 days, 73% declarations' duties and taxes paid within 3 days
- Secured access to ASYCUDAWorld
- Requests status available online, in real-time
- Reduced human intervention
- Full tracking of goods transferred from one station to another
- Complete, accurate and timely generation of trade data
- Continual increase of annual revenue: In 2017-2021, 11% average annual revenue increase
- Facilitated and encouraged international trade: 25'000+ manifests submitted in 2021 compared to 14'000+ in 2017, 3.9+ million declarations processed in 2021 compared to 3.2+ million in 2017

82%

**of declarations submitted
through ASYCUDAWorld
were processed in
less than 3 days**

Chittagong Customs House



The revenue board has decided to trim the [...] National Single Window (NSW) project detecting its overlapping components. It has found components of NSW [...] have already been covered by the existing ASYCUDAWorld.

”

The Financial Express

Partner:



BANGLADESH

Connecting Customs and PGAs

Total number of customs offices



31 Computerized

15 Paper-based

Volume of activity (2021)

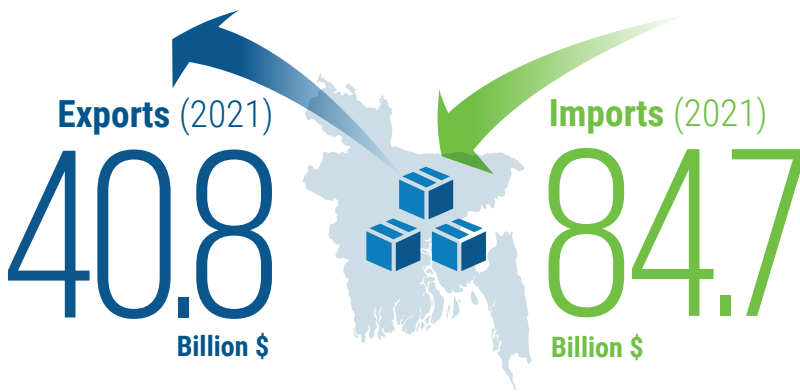
25,812
Customs **manifests**

2,349,226
Customs **waybills**

1,877,567
Import declarations

2,044,726
Export declarations

1,387,359
TEUs at seaports
(Number of 20-foot equivalent containers)



Persons trained